

BEAD Program: A Framework to Allocate Funding for Broadband Availability

State Broadband Report: Wyoming

January 2024



1 Eligible Locations

How many unserved/underserved locations are eligible for BEAD funding?

23%

61K LOCATIONS

OF WYOMING LOCATIONS LACK HIGH-SPEED BROADBAND IN JUN 2023

VS. 9% STATE/TERRITORY AVERAGE

UNSERVED LOCATIONS, JUN. 2024



28.8K
LOCATIONS

Are estimated to lack broadband access at 25/3 Mbps

UNDERSERVED LOCATIONS, JUN. 2024



17.9K
LOCATIONS

Are estimated to lack broadband access at 100/20 Mbps

These locations are primarily in rural areas and are eligible for BEAD funding to deploy broadband service.

2 Total Funding

How much capital funding is the State/Territory estimated to have?

\$348M

IN BEAD FUNDING HAS BEEN ALLOCATED TO WYOMING

VS. \$743M STATE/TERRITORY AVERAGE

ESTIMATED BEAD FUNDING:

BEAD Funds allocated by NTIA

\$348B

Estimated Provider Match

\$140M

Estimated Total Capital

\$488M

The provider match is estimated using a high-level service provider business case. See national summary deck for full details.

3 Deployment

How many locations can be covered with fiber and other technologies?

\$93M-\$348M

OF BEAD FUNDS IS REQUIRED TO BUILD HIGH-SPEED BROADBAND TO ALL ELIGIBLE LOCATIONS

DEPLOYMENT SCENARIOS:



Baseline Fiber

100% LOCATIONS REACHED

9% FIBER LOCATIONS

\$233M
TOTAL CAPITAL COST

\$255M
REMAINING BUDGET



Maximum Fiber

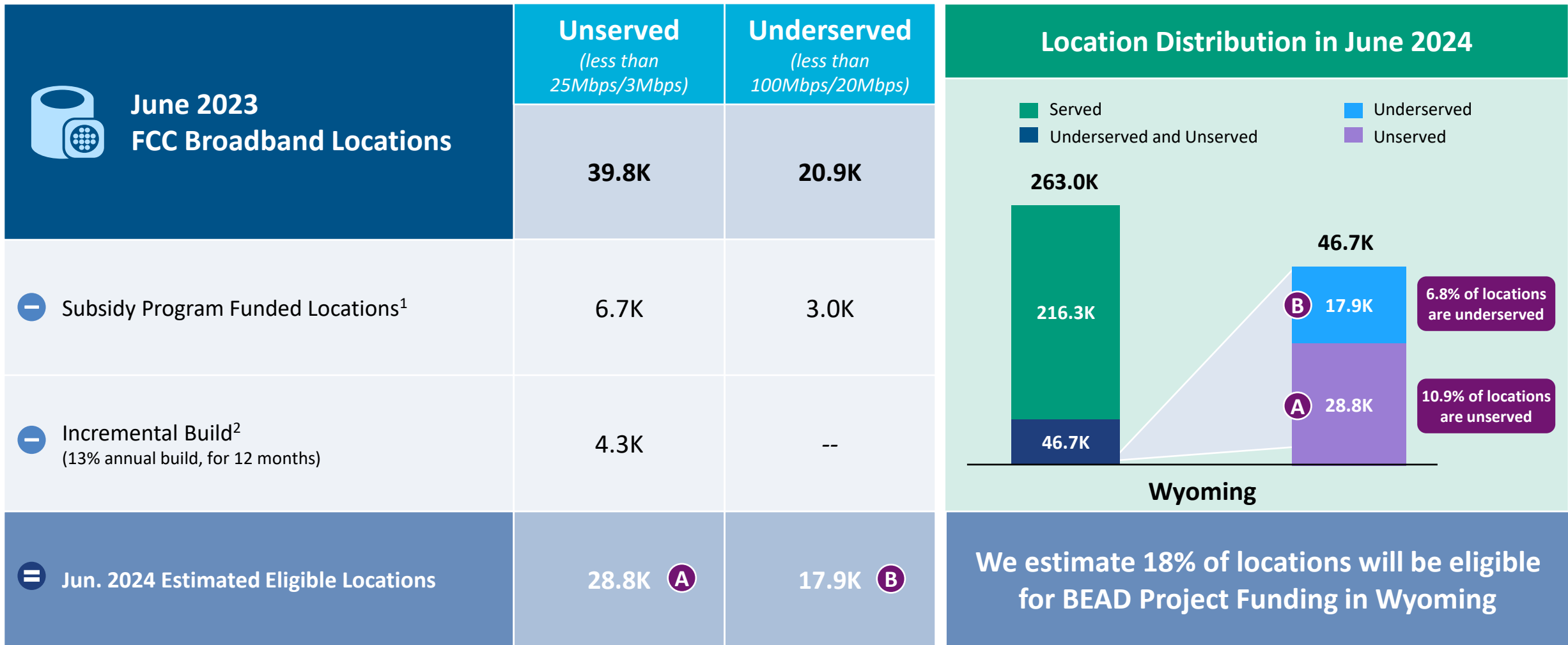
100% LOCATIONS REACHED

30% FIBER LOCATIONS

\$488M
TOTAL CAPITAL COST

\$--M
REMAINING BUDGET

Wyoming | Estimated Eligible Locations for BEAD Projects



1. Locations with “commitments” to receive support from federal subsidy programs

2. Given the uncertainty around the magnitude of locations moving from unerved to underserved, we have not made incremental builds adjustments to underserved locations

BEAD eligible locations does not account for state-specific eligibility rules set forth in Initial Proposals

Source: Cartesian, FCC National Broadband Map (June 2023 data, released in November 2023)

Confidential and Proprietary — Copyright © 2024 Cartesian, Inc. All rights reserved.

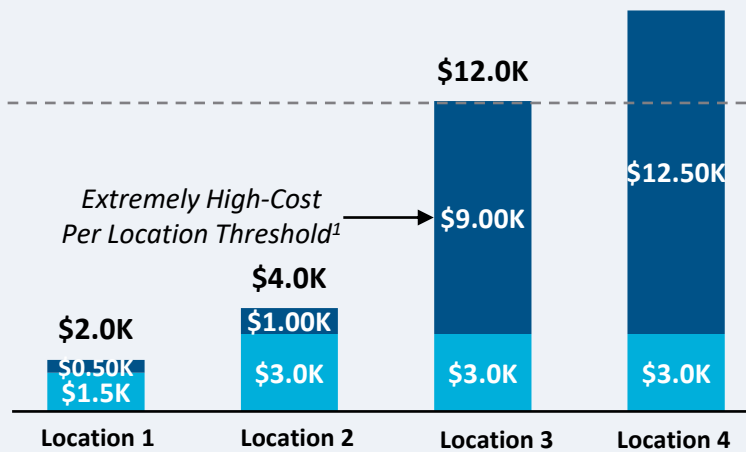
Wyoming | BEAD Funding & Estimated Provider Match

Provider Match Examples

Total Deployment Cost per Location

- BEAD Funds Per Location
- Estimated Provider Match

High-Cost Areas
\$15.5K

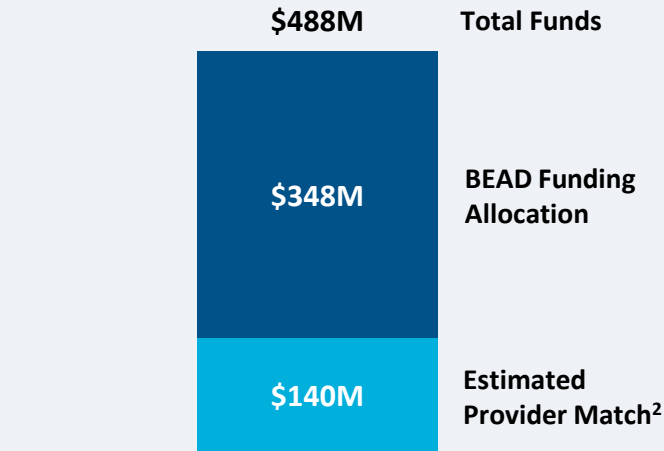


Provider Match %

75% 75% 25% 19%

To be conservative, we assume provider match amounts have a maximum of 75% and a minimum of 25%, except in high-cost areas

Total Capital Available - Wyoming



\$488M in total capital is estimated to be available to serve unserved/underserved Wyoming locations (combining BEAD funding and estimated provider match)

Provider Match - Wyoming

Total Estimated Provider Match: **\$140M**

Total Estimated Eligible Locations: **46.7K**

Average Provider Match: **\$2,998 PER LOCATION**

We estimate the average provider match will be \$2,998 – provider matches will be 75% where cost to deploy is less than \$4K

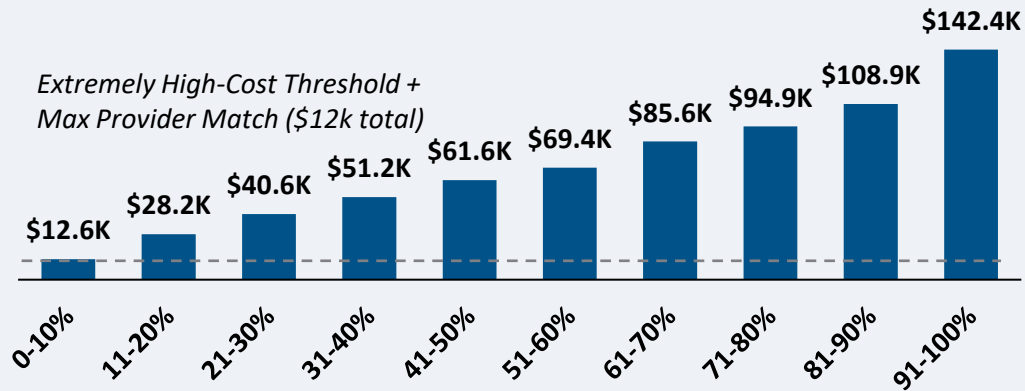
1. The model uses a \$9k threshold, however, States/Territories will individually need to determine their appropriate extremely high-cost threshold
 2. In reality, providers will determine the viable level of match funding for each project using a business case model. They will be willing to contribute a greater match in some locations and less in others. Locations which are hardest to serve may need to be fully funded by BEAD with no match. Competitive bidding should drive provider matches towards this level.

Wyoming | Cost to Deploy Fiber by Decile

CAPEX Fiber Deployment Cost per Location Segmented by Cost Deciles¹

Unserved Locations

Overall Average Cost per Location: \$70,758



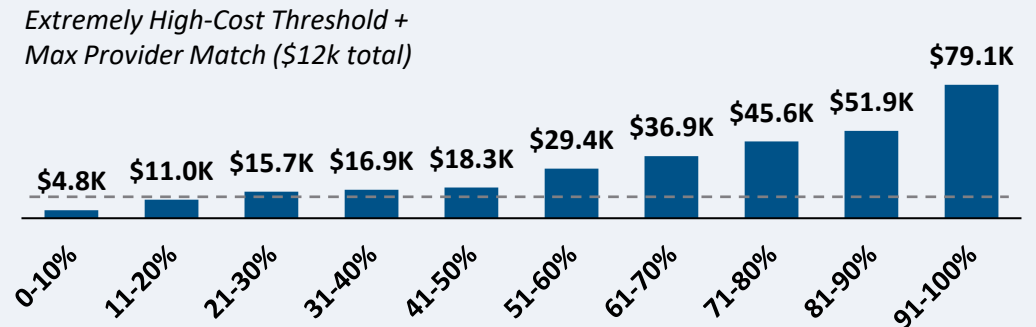
Average Tract Density (Location per sq. Mile)

10	4	8	1	1	1	1	1	1	0
----	---	---	---	---	---	---	---	---	---

28.8K Locations

Underserved Locations

Overall Average Cost per Location: \$31,713



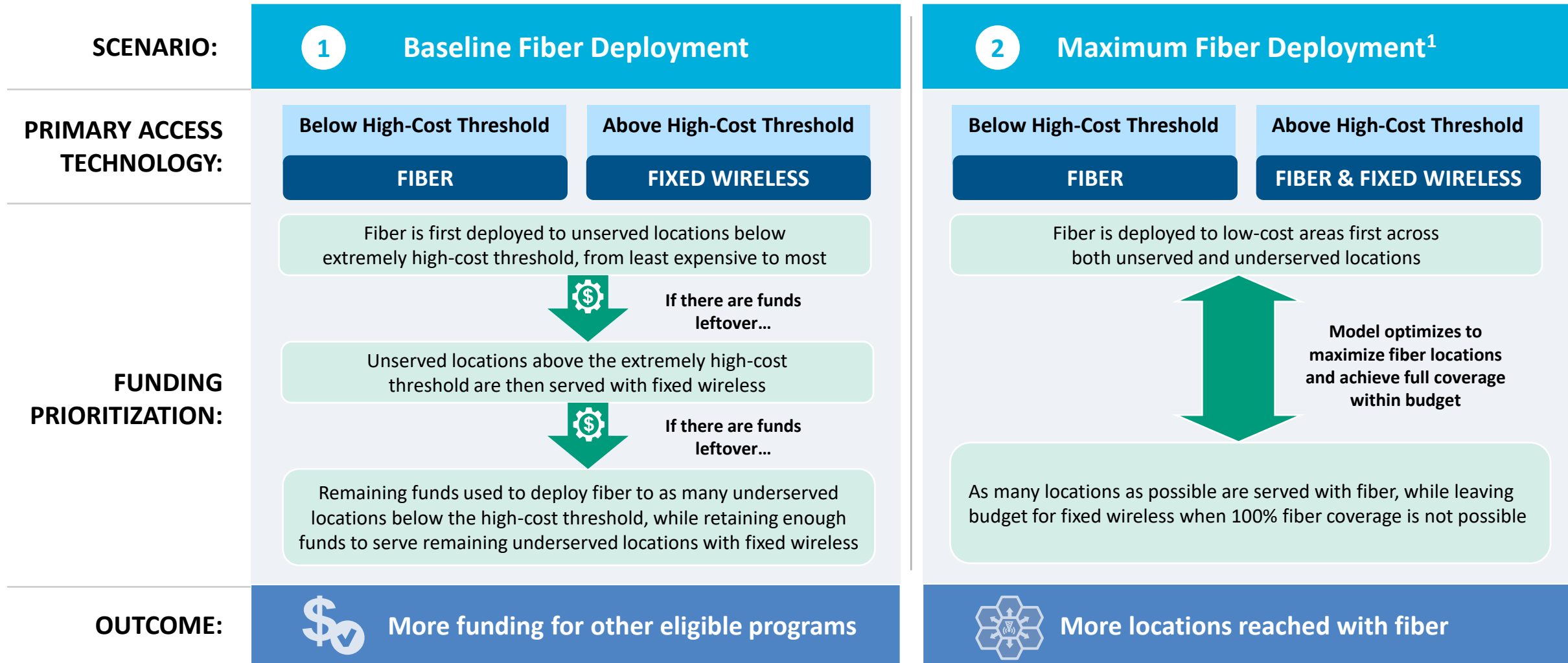
Average Tract Density (Location per sq. Mile)

15	10	4	8	7	10	2	36	2	1
----	----	---	---	---	----	---	----	---	---

17.9K Locations

Over 5% of locations are estimated to fall below the High-Cost Threshold + Provider Match

Wyoming | Fiber Preferencing Scenarios



1. Scenario 2 deploys fiber beyond the extremely high-cost threshold
 Source: Cartesian
 Confidential and Proprietary — Copyright © 2024 Cartesian, Inc. All rights reserved.

3 Develop Deployment Scenarios

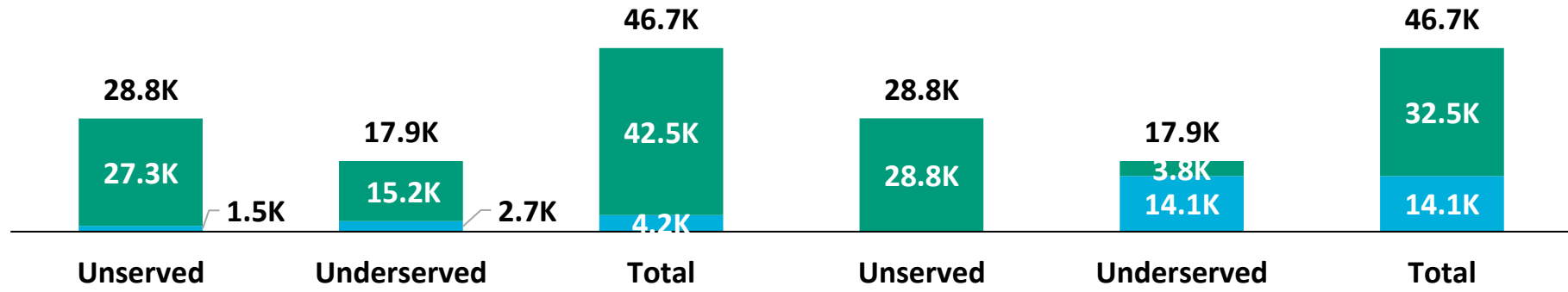
Wyoming | Scenario Analysis Results

SCENARIO:

1 Baseline Fiber Deployment

2 Maximum Fiber Deployment

■ Fixed Wireless
■ Fiber



	Scenario 1	Scenario 2
Capex Required per Locations ¹	\$4,958	\$4,800
BEAD Funds Available to State	\$348M	\$348M
+ Estimated Provider Match	\$140M	\$140M
= Total Available Capital	\$488M	\$488M
- Capex Required to Build	\$233M	\$488M
= Remaining Funds	\$255M	\$--M
% of Locations Reached	100%	100%
% of Locations Reached with Fiber	9%	30%

1. Funding to deploy fiber before the maximum \$3k provider match per location
 Source: Cartesian, FCC National Broadband Map (June 2023 data, released in November 2023), Benton, NTIA
 Confidential and Proprietary — Copyright © 2024 Cartesian, Inc. All rights reserved.

Wyoming | Conclusion



Funding Summary

Wyoming is expected to receive

\$348M in BEAD funding



\$140M in estimated provider matching

We estimate the funding is sufficient to reach all of Wyoming's 46.7K eligible locations with high-speed broadband



Key Findings

Wyoming will need to decide how far to deploy fiber while considering the trade-off of having higher fiber coverage vs. retaining funds for other BEAD eligible programs

A Baseline Fiber Deployment...



Maximizing Fiber...

- Leaves \$255M additional funds for affordability programs
- Reaches 9% of locations with fiber
- Requires 91% to be reached with other tech.

- Exhausts funds without leaving additional funds for affordability programs
- Reaches 30% of locations with fiber
- Requires 70% to be reached with other tech.

States/Territories will set their own extremely high-cost threshold and may choose a threshold or funding paradigm different from these two scenarios

Wyoming | ACA Connects Members

Member Name
All West Utah, Inc.
Clarity Telecom, LLC dba Bluepeak
Consolidated Communications, Inc.
Golden West Cablevision, Inc.
Tongue River Communications, Inc.
Tri County Telephone Association, Inc.
Uintah Basin Electronic Telecom dba Strata Network
Vyve
Windbreak Cable



www.acaconnects.org

GRANT SPELLMEYER
PRESIDENT AND CEO
GSPELLMEYER@ACACONNECTS.ORG

BRIAN HURLEY
CHIEF REGULATORY COUNSEL
BHURLEY@ACACONNECTS.ORG



www.cartesian.com

MICHAEL DARGUE
VICE PRESIDENT
MICHAEL.DARGUE@CARTESIAN.COM

SAMUEL KORNSTEIN
MANAGING DIRECTOR
SAMUEL.KORNSTEIN@CARTESIAN.COM