

# BEAD Program: A Framework to Allocate Funding for Broadband Availability

## State Broadband Report: Ohio

January 2024





## 1 Eligible Locations

How many unserved/underserved locations are eligible for BEAD funding?

6%

262K LOCATIONS

OF OHIO LOCATIONS LACK HIGH-SPEED BROADBAND IN JUN 2023

VS. 9% STATE/TERRITORY AVERAGE

### UNSERVED LOCATIONS, JUN. 2024



94.3K LOCATIONS

Are estimated to lack broadband access at 25/3 Mbps

### UNDERSERVED LOCATIONS, JUN. 2024



64.4K LOCATIONS

Are estimated to lack broadband access at 100/20 Mbps

These locations are primarily in rural areas and are eligible for BEAD funding to deploy broadband service.

## 2 Total Funding

How much capital funding is the State/Territory estimated to have?

\$794M

IN BEAD FUNDING HAS BEEN ALLOCATED TO OHIO

VS. \$743M STATE/TERRITORY AVERAGE

### ESTIMATED BEAD FUNDING:

BEAD Funds allocated by NTIA

\$794M

Estimated Provider Match

\$464M

Estimated Total Capital

\$1.3B

The provider match is estimated using a high-level service provider business case. See national summary deck for full details.

## 3 Deployment

How many locations can be covered with fiber and other technologies?

\$708M-\$794M

OF BEAD FUNDS IS REQUIRED TO BUILD HIGH-SPEED BROADBAND TO ALL ELIGIBLE LOCATIONS

### DEPLOYMENT SCENARIOS:

Baseline Fiber

Maximum Fiber

100% LOCATIONS REACHED

75% FIBER LOCATIONS

100% LOCATIONS REACHED

80% FIBER LOCATIONS





\$1.2B TOTAL CAPITAL COST

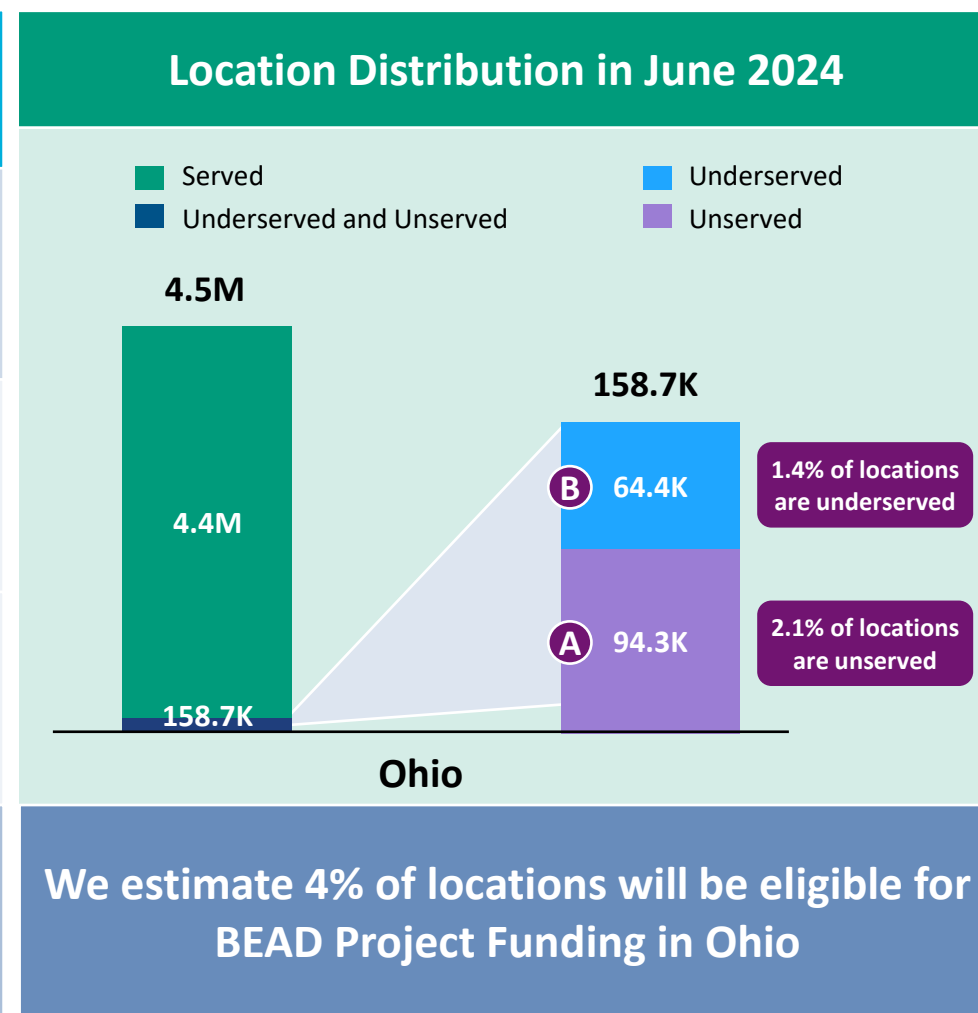
\$1.3B TOTAL CAPITAL COST

\$86M REMAINING BUDGET

\$--M REMAINING BUDGET

## Ohio | Estimated Eligible Locations for BEAD Projects

 <b>June 2023 FCC Broadband Locations</b>	Unerved <i>(less than 25Mbps/3Mbps)</i>	Underserved <i>(less than 100Mbps/20Mbps)</i>
		<b>175.2K</b>
 Subsidy Program Funded Locations <sup>1</sup>	66.9K	22.7K
 Incremental Build <sup>2</sup> (13% annual build, for 12 months)	14.1K	--
 Jun. 2024 Estimated Eligible Locations	94.3K <b>(A)</b>	64.4K <b>(B)</b>



1. Locations with "commitments" to receive support from federal subsidy programs

2. Given the uncertainty around the magnitude of locations moving from unerved to underserved, we have not made incremental builds adjustments to underserved locations

BEAD eligible locations does not account for state-specific eligibility rules set forth in Initial Proposals

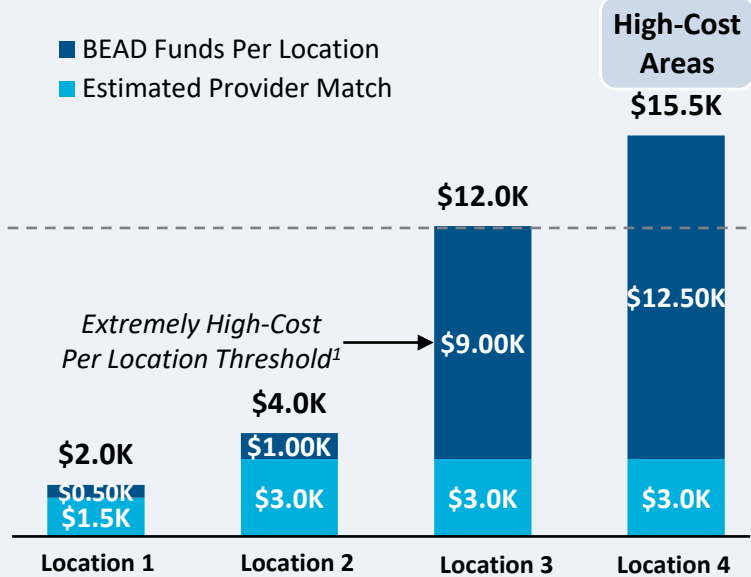
Source: Cartesian, FCC National Broadband Map (June 2023 data, released in November 2023)

Confidential and Proprietary — Copyright © 2024 Cartesian, Inc. All rights reserved.

## Provider Match Examples

## Total Deployment Cost per Location

- BEAD Funds Per Location
- Estimated Provider Match

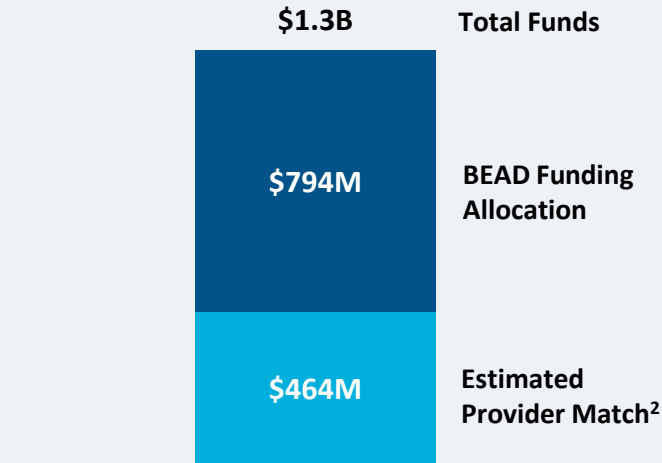


## Provider Match %

75%	75%	25%	19%
-----	-----	-----	-----

To be conservative, we assume provider match amounts have a maximum of 75% and a minimum of 25%, except in high-cost areas

## Total Capital Available - Ohio



\$1.3B in total capital is estimated to be available to serve unserved/underserved Ohio locations (combining BEAD funding and estimated provider match)

## Provider Match - Ohio

Total Estimated  
Provider Match:

\$464M

Total Estimated  
Eligible Locations:

158.7K

Average  
Provider Match:

\$2,923  
PER LOCATION

We estimate the average provider match will be \$2,923 – provider matches will be 75% where cost to deploy is less than \$4K

1. The model uses a \$9k threshold, however, States/Territories will individually need to determine their appropriate extremely high-cost threshold

2. In reality, providers will determine the viable level of match funding for each project using a business case model. They will be willing to contribute a greater match in some locations and less in others. Locations which are hardest to serve may need to be fully funded by BEAD with no match. Competitive bidding should drive provider matches towards this level.

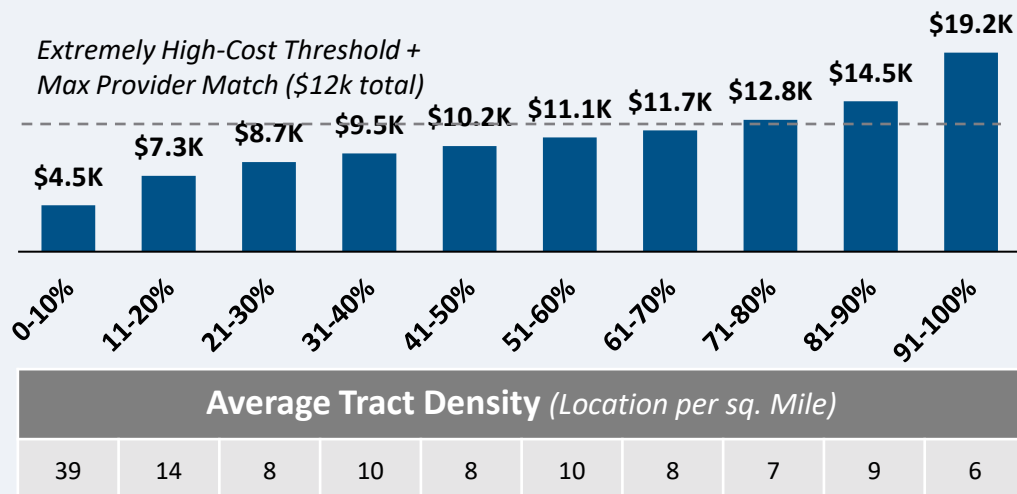
Source: Cartesian, FCC National Broadband Map (June 2023 data, released in November 2023), Benton, NTIA

Confidential and Proprietary — Copyright © 2024 Cartesian, Inc. All rights reserved.

CAPEX Fiber Deployment Cost per Location Segmented by Cost Deciles<sup>1</sup>

## Unserviced Locations

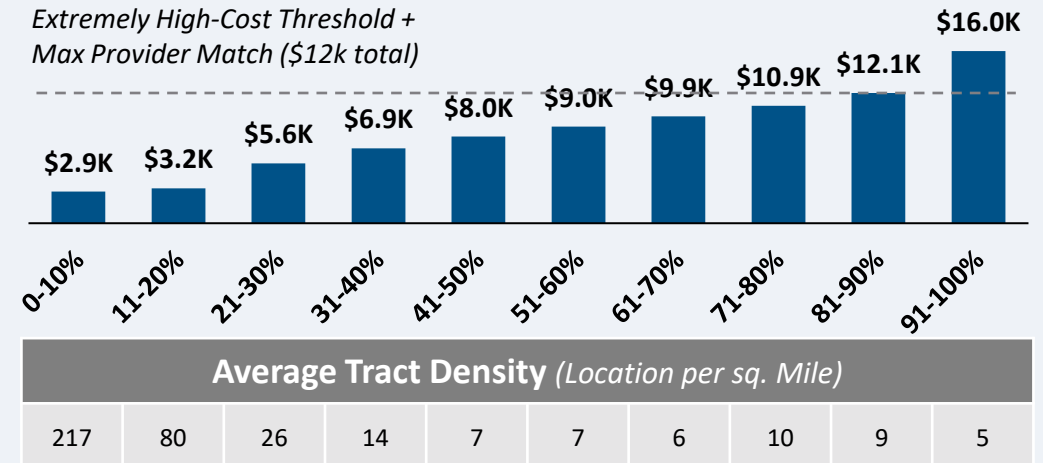
Overall Average Cost per Location: \$10,968



94.3K Locations

## Underserved Locations

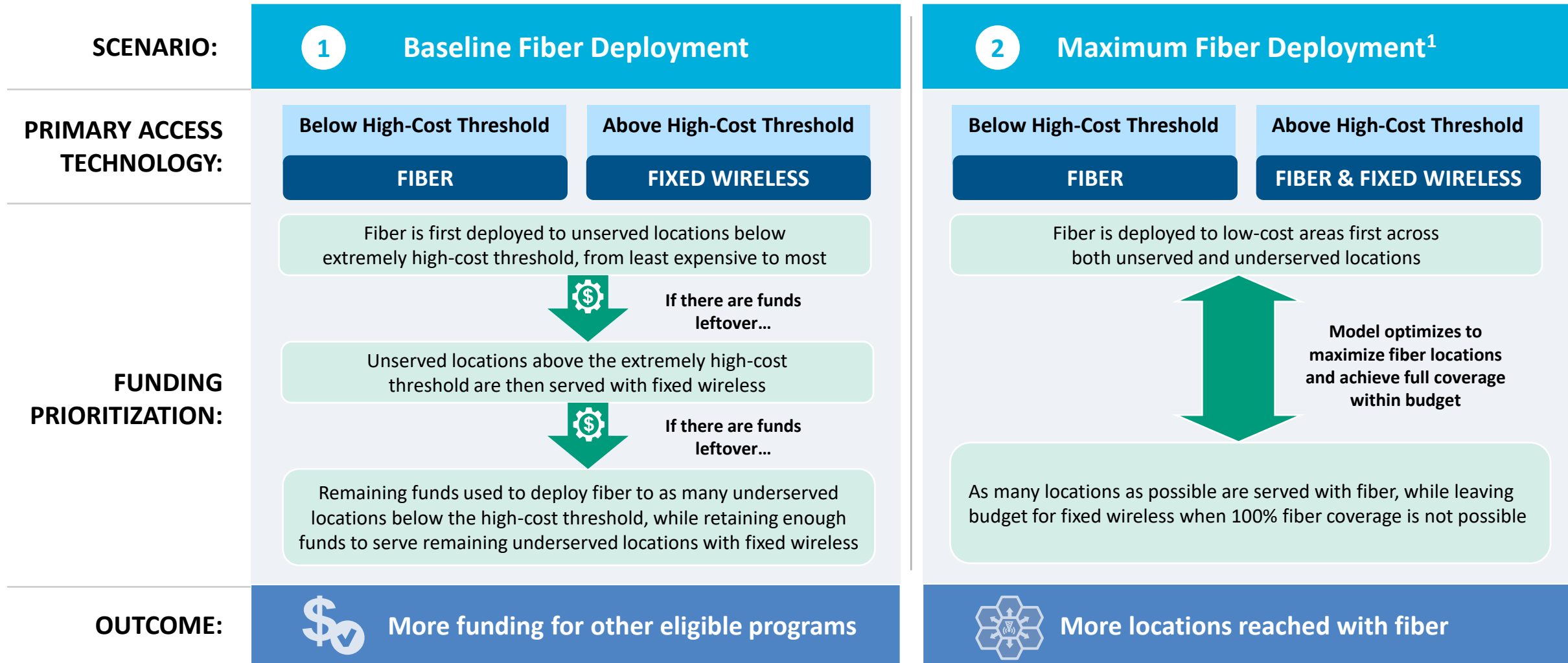
Overall Average Cost per Location: \$8,494



64.4K Locations

Over 70% of locations are estimated to fall below the High-Cost Threshold + Provider Match

# Ohio | Fiber Preferencing Scenarios



1. Scenario 2 deploys fiber beyond the extremely high-cost threshold

# 3 Develop Deployment Scenarios

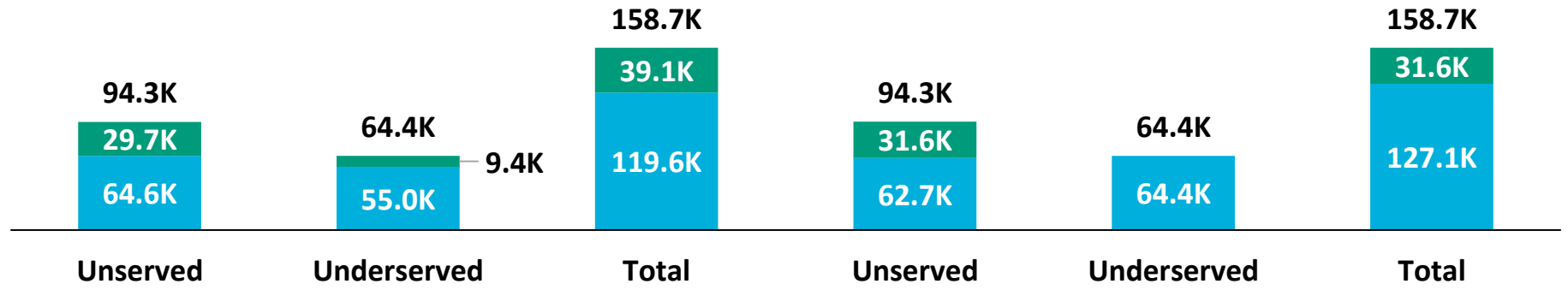
## Ohio | Scenario Analysis Results

SCENARIO:

### 1 Baseline Fiber Deployment

### 2 Maximum Fiber Deployment

■ Fixed Wireless  
■ Fiber



	Scenario 1	Scenario 2
Capex Required per Locations <sup>1</sup>	\$7,639	\$7,903
BEAD Funds Available to State	\$794M	\$794M
+ Estimated Provider Match	\$464M	\$464M
= Total Available Capital	\$1.3B	\$1.3B
- Capex Required to Build	\$1.2B	\$1.3B
= Remaining Funds	\$86M	\$--M
% of Locations Reached	100%	100%
% of Locations Reached with Fiber	75%	80%

1. Funding to deploy fiber before the maximum \$3k provider match per location  
 Source: Cartesian, FCC National Broadband Map (June 2023 data, released in November 2023), Benton, NTIA  
 Confidential and Proprietary — Copyright © 2024 Cartesian, Inc. All rights reserved.



## Funding Summary

Ohio is expected to receive

**\$794M in BEAD funding**



**\$464M in estimated provider matching**

We estimate the funding is sufficient to reach all of Ohio's 158.7k eligible locations with high-speed broadband



## Key Findings

Ohio will need to decide how far to deploy fiber while considering the trade-off of having higher fiber coverage vs. retaining funds for other BEAD eligible programs

### A Baseline Fiber Deployment...



### Maximizing Fiber...

- Leaves \$86M additional funds for affordability programs
- Reaches 75% of locations with fiber
- Requires 25% to be reached with other tech.

- Exhausts funds without leaving additional funds for affordability programs
- Reaches 80% of locations with fiber
- Requires 20% to be reached with other tech.

**States/Territories will set their own extremely high-cost threshold and may choose a threshold or funding paradigm different from these two scenarios**



# Ohio | ACA Connects Members

Member Name	
Armstrong	Glandorf Telephone Co, Inc.
Arthur Mutual Telephone Company	Hanson Communications, Inc.
Atlantic Broadband	Horizon Telcom, Inc.
Ayersville Telephone Company	Hotwire Communications Ltd
Benton Ridge Telephone Company	Jefferson County Cable TV, Inc.
Block Communications, Inc.	Kalida Telephone Company, Inc.
BTC Communications	Massillon Cable TV, Inc.
BTC Multimedia	Mediacom, LLC
Cable Coop, Inc.	Metronet
CAS Cable	Nelsonville TV Cable, Inc.
Cincinnati Bell, Inc.	NK Telco, Inc. dba New Knoxville Cable Systems
City Of Wadsworth	Otec Communication Co
Citynet Philippi, LLC	Point Broadband, LLC
Conneaut Telephone Co	RTEC Communications, Inc.
Consolidated Communications, Inc.	Sherwood Mutual Telephone Association, Inc.
Doylestown Cable TV	TDS Telecom
DP Cable TV	Wabash Mutual Telephone Company
Falcon1 dba Minford TV	Waldron Communication Company
FJ Communications, Inc.	



[www.acaconnects.org](http://www.acaconnects.org)

**GRANT SPELLMEYER**  
PRESIDENT AND CEO  
GSPELLMEYER@ACACONNECTS.ORG

**BRIAN HURLEY**  
CHIEF REGULATORY COUNSEL  
BHURLEY@ACACONNECTS.ORG



[www.cartesian.com](http://www.cartesian.com)

**MICHAEL DARGUE**  
VICE PRESIDENT  
MICHAEL.DARGUE@CARTESIAN.COM

**SAMUEL KORNSTEIN**  
MANAGING DIRECTOR  
SAMUEL.KORNSTEIN@CARTESIAN.COM