

# BEAD Program: A Framework to Allocate Funding for Broadband Availability

## State Broadband Report: Missouri

January 2024





## 1 Eligible Locations

*How many unserved/underserved locations are eligible for BEAD funding?*

**15%**  
388K LOCATIONS  
OF MISSOURI LOCATIONS LACK HIGH-SPEED BROADBAND IN JUN 2023  
VS. 9% STATE/TERRITORY AVERAGE

### UNSERVED LOCATIONS, JUN. 2024



**141.7K**  
LOCATIONS

Are estimated to lack broadband access at **25/3 Mbps**

### UNDERSERVED LOCATIONS, JUN. 2024



**73.9K**  
LOCATIONS

Are estimated to lack broadband access at **100/20 Mbps**

These locations are primarily in rural areas and are eligible for BEAD funding to deploy broadband service.

## 2 Total Funding

*How much capital funding is the State/Territory estimated to have?*

**\$1.7B**  
IN BEAD FUNDING HAS BEEN ALLOCATED TO MISSOURI  
VS. \$743M STATE/TERRITORY AVERAGE

### ESTIMATED BEAD FUNDING:

BEAD Funds allocated by NTIA

**\$1.7B**

Estimated Provider Match

**\$616M**

Estimated Total Capital

**\$2.4B**

The provider match is estimated using a high-level service provider business case. See national summary deck for full details.

## 3 Deployment

*How many locations can be covered with fiber and other technologies?*

**\$594M-\$1.5B**  
OF BEAD FUNDS IS REQUIRED TO BUILD HIGH-SPEED BROADBAND TO ALL ELIGIBLE LOCATIONS

### DEPLOYMENT SCENARIOS:



Baseline Fiber



Maximum Fiber

**100%**  
LOCATIONS REACHED

**68%**  
FIBER LOCATIONS

**100%**  
LOCATIONS REACHED

**100%**  
FIBER LOCATIONS

**\$1.2B**  
TOTAL CAPITAL COST





**\$1.1B**  
REMAINING BUDGET

**\$2.1B**  
TOTAL CAPITAL COST

**\$226M**  
REMAINING BUDGET

**1** Estimate Eligible Locations

# Missouri | Estimated Eligible Locations for BEAD Projects

 <b>June 2023 FCC Broadband Locations</b>	Unerved <i>(less than 25Mbps/3Mbps)</i>	Underserved <i>(less than 100Mbps/20Mbps)</i>
		<b>277.4K</b>
 Subsidy Program Funded Locations <sup>1</sup>	114.5K	36.8K
 Incremental Build <sup>2</sup> (13% annual build, for 12 months)	21.2K	--
 <b>Jun. 2024 Estimated Eligible Locations</b>	<b>141.7K (A)</b>	<b>73.9K (B)</b>



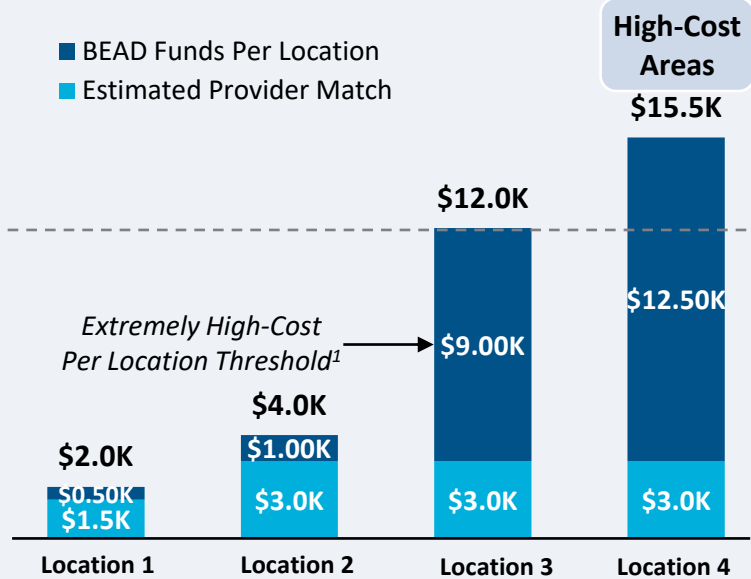
1. Locations with "commitments" to receive support from federal subsidy programs  
 2. Given the uncertainty around the magnitude of locations moving from unerved to underserved, we have not made incremental builds adjustments to underserved locations  
 BEAD eligible locations does not account for state-specific eligibility rules set forth in Initial Proposals  
 Source: Cartesian, FCC National Broadband Map (June 2023 data, released in November 2023)  
 Confidential and Proprietary — Copyright © 2024 Cartesian, Inc. All rights reserved.

## Missouri | BEAD Funding &amp; Estimated Provider Match

## Provider Match Examples

## Total Deployment Cost per Location

- BEAD Funds Per Location
- Estimated Provider Match

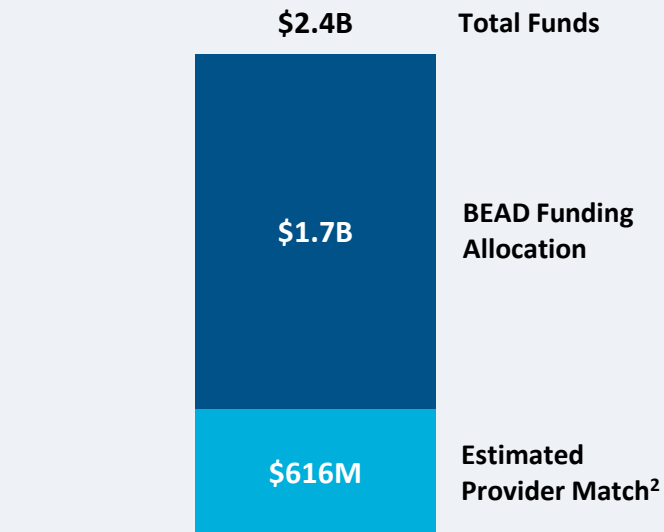


## Provider Match %

75%	75%	25%	19%
-----	-----	-----	-----

To be conservative, we assume provider match amounts have a maximum of 75% and a minimum of 25%, except in high-cost areas

## Total Capital Available - Missouri



\$2.4B in total capital is estimated to be available to serve unserved/underserved Missouri locations (combining BEAD funding and estimated provider match)

## Provider Match - Missouri

Total Estimated Provider Match: **\$616M**

Total Estimated Eligible Locations: **215.6K**

Average Provider Match: **\$2,860 PER LOCATION**

We estimate the average provider match will be \$2,860 – provider matches will be 75% where cost to deploy is less than \$4K

1. The model uses a \$9k threshold, however, States/Territories will individually need to determine their appropriate extremely high-cost threshold

2. In reality, providers will determine the viable level of match funding for each project using a business case model. They will be willing to contribute a greater match in some locations and less in others. Locations which are hardest to serve may need to be fully funded by BEAD with no match. Competitive bidding should drive provider matches towards this level.

Source: Cartesian, FCC National Broadband Map (June 2023 data, released in November 2023), Benton, NTIA

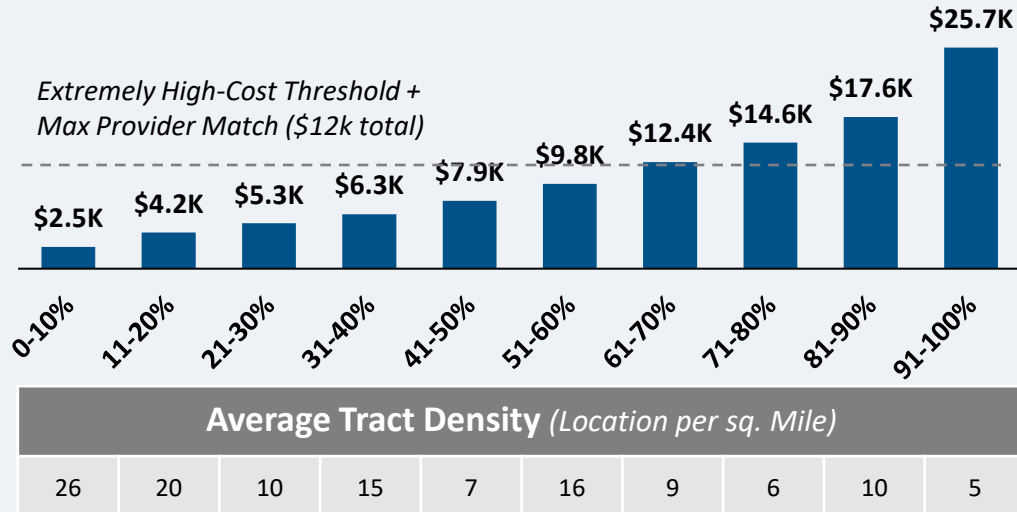
Confidential and Proprietary — Copyright © 2024 Cartesian, Inc. All rights reserved.

## Missouri | Cost to Deploy Fiber by Decile

CAPEX Fiber Deployment Cost per Location Segmented by Cost Deciles<sup>1</sup>

## Unserved Locations

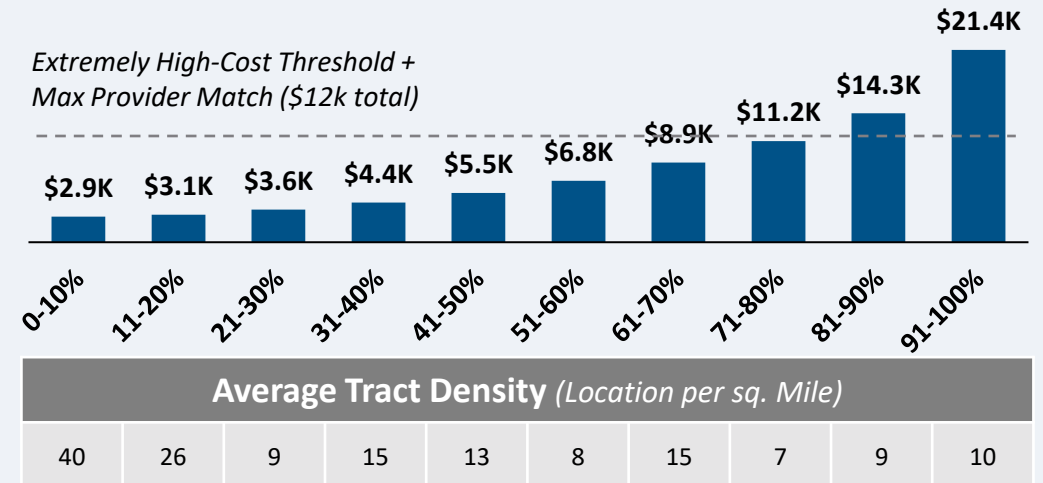
Overall Average Cost per Location: \$10,693



141.7K Locations

## Underserved Locations

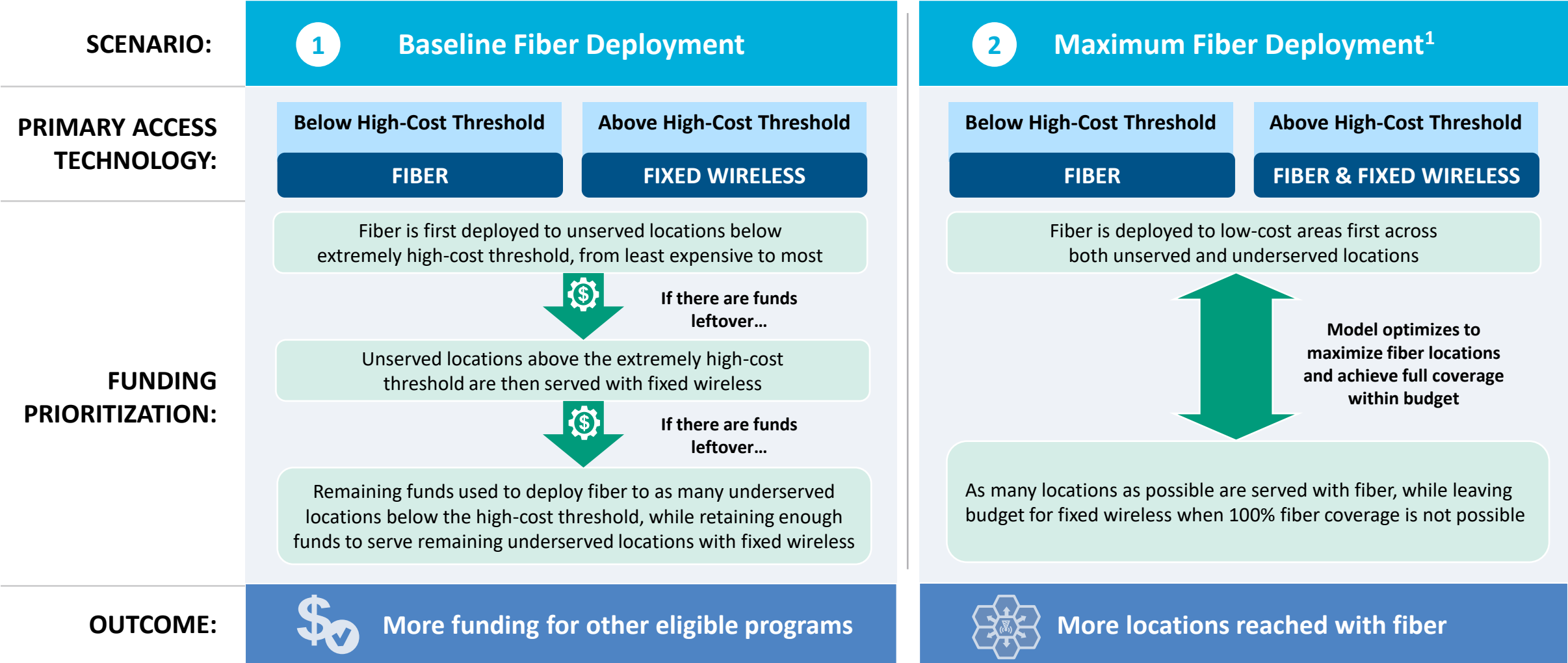
Overall Average Cost per Location: \$8,294



73.9K Locations

Over 65% of locations are estimated to fall below the High-Cost Threshold + Provider Match

# Missouri | Fiber Preferencing Scenarios



1. Scenario 2 deploys fiber beyond the extremely high-cost threshold  
 Source: Cartesian  
 Confidential and Proprietary — Copyright © 2024 Cartesian, Inc. All rights reserved.

# 3 Develop Deployment Scenarios

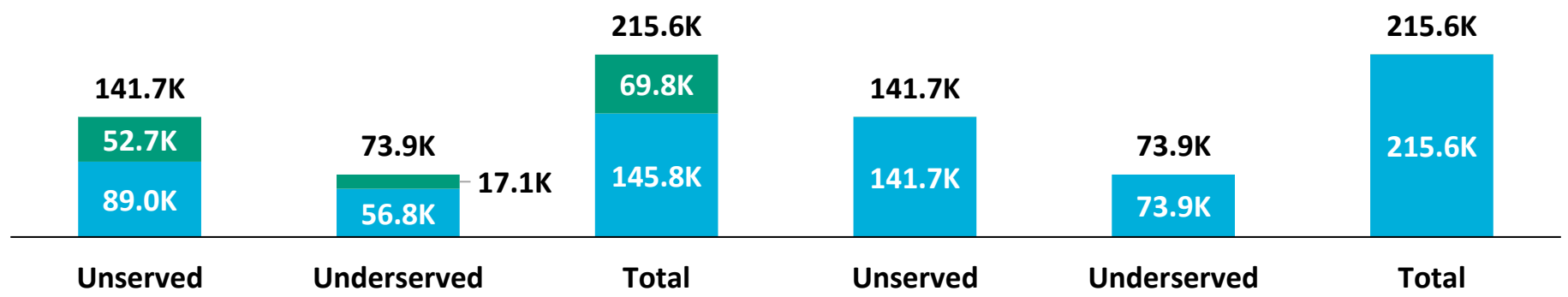
## Missouri | Scenario Analysis Results

SCENARIO:

**1** Baseline Fiber Deployment

**2** Maximum Fiber Deployment

■ Fixed Wireless  
■ Fiber



	Scenario 1	Scenario 2
Capex Required per Locations <sup>1</sup>	\$5,737	\$5,616
BEAD Funds Available to State	\$1.7B	\$1.7B
+ Estimated Provider Match	\$616M	\$616M
= Total Available Capital	\$2.4B	\$2.4B
- Capex Required to Build	\$1.2B	\$2.1B
= Remaining Funds	\$1.1B	\$226M
% of Locations Reached	100%	100%
% of Locations Reached with Fiber	68%	100%

1. Funding to deploy fiber before the maximum \$3k provider match per location  
 Source: Cartesian, FCC National Broadband Map (June 2023 data, released in November 2023), Benton, NTIA  
 Confidential and Proprietary — Copyright © 2024 Cartesian, Inc. All rights reserved.



# Missouri | Conclusion



## Funding Summary

Missouri is expected to receive

**\$1.7B in BEAD funding**



**\$616M in estimated provider matching**

We estimate the funding is sufficient to reach all of Missouri's 215.6k eligible locations with high-speed broadband



## Key Findings

Missouri appears well positioned to reach all eligible premises and have funding for other BEAD eligible programs

### A Baseline Fiber Deployment...



### Maximizing Fiber...

- Leaves \$1.1B additional funds for affordability programs
- Reaches 68% of locations with fiber
- Requires 32% to be reached with other tech.

- Leaves \$226M additional funds for affordability programs
- Reaches 100% of locations with fiber
- Requires 0% to be reached with other tech.

**States/Territories will set their own extremely high-cost threshold and may choose a threshold or funding paradigm different from these two scenarios**



# Missouri | ACA Connects Members

Member Name	
American Broadband	MidAtlanticBroadband, Inc.
Boycom Cablevision, Inc.	Ozarksgo, LLC
Cable One, Inc.	Ralls Technologies, LLC
Chariton Valley Communications Corp	Rock Port Cablevision
Citizens Cablevision, Inc.	Skyfinet, LLC
Citizens Mutual Telephone Cooperative, Inc.	Socket Telecom, LLC
Como Comm, Inc.	Stimulus Technologies Of Missouri, LLC
Consolidated Communications, Inc.	TDS Telecom
Crawkan Telephone Cooperative, Inc.	United Services, Inc.
Grain Capital	WH I3B Holdings, LLC
Mediacom, LLC	



[www.acaconnects.org](http://www.acaconnects.org)

**GRANT SPELLMEYER**  
PRESIDENT AND CEO  
GSPELLMEYER@ACACONNECTS.ORG

**BRIAN HURLEY**  
CHIEF REGULATORY COUNSEL  
BHURLEY@ACACONNECTS.ORG



[www.cartesian.com](http://www.cartesian.com)

**MICHAEL DARGUE**  
VICE PRESIDENT  
MICHAEL.DARGUE@CARTESIAN.COM

**SAMUEL KORNSTEIN**  
MANAGING DIRECTOR  
SAMUEL.KORNSTEIN@CARTESIAN.COM