

BEAD Program: A Framework to Allocate Funding for Broadband Availability

State Broadband Report: Michigan

January 2024





1 Eligible Locations

How many unserved/underserved locations are eligible for BEAD funding?

10%
409K LOCATIONS
OF MICHIGAN LOCATIONS LACK HIGH-SPEED BROADBAND IN JUN 2023
VS. 9% STATE/TERRITORY AVERAGE

UNSERVED LOCATIONS, JUN. 2024



142.1K
LOCATIONS

Are estimated to lack broadband access at **25/3 Mbps**

UNDERSERVED LOCATIONS, JUN. 2024



57.8K
LOCATIONS

Are estimated to lack broadband access at **100/20 Mbps**

These locations are primarily in rural areas and are eligible for BEAD funding to deploy broadband service.

2 Total Funding

How much capital funding is the State/Territory estimated to have?

\$1.6B
IN BEAD FUNDING HAS BEEN ALLOCATED TO MICHIGAN
VS. \$743M STATE/TERRITORY AVERAGE

ESTIMATED BEAD FUNDING:

BEAD Funds allocated by NTIA

\$1.6B

Estimated Provider Match

\$59s4M

Estimated Total Capital

\$2.2B

The provider match is estimated using a high-level service provider business case. See national summary deck for full details.

3 Deployment

How many locations can be covered with fiber and other technologies?

\$778M-\$1.0B
OF BEAD FUNDS IS REQUIRED TO BUILD HIGH-SPEED BROADBAND TO ALL ELIGIBLE LOCATIONS

DEPLOYMENT SCENARIOS:


 **Baseline Fiber**

100%
LOCATIONS REACHED

91%
FIBER LOCATIONS

\$1.4B
TOTAL CAPITAL COST

\$782M
REMAINING BUDGET

 **Maximum Fiber**





100%
LOCATIONS REACHED

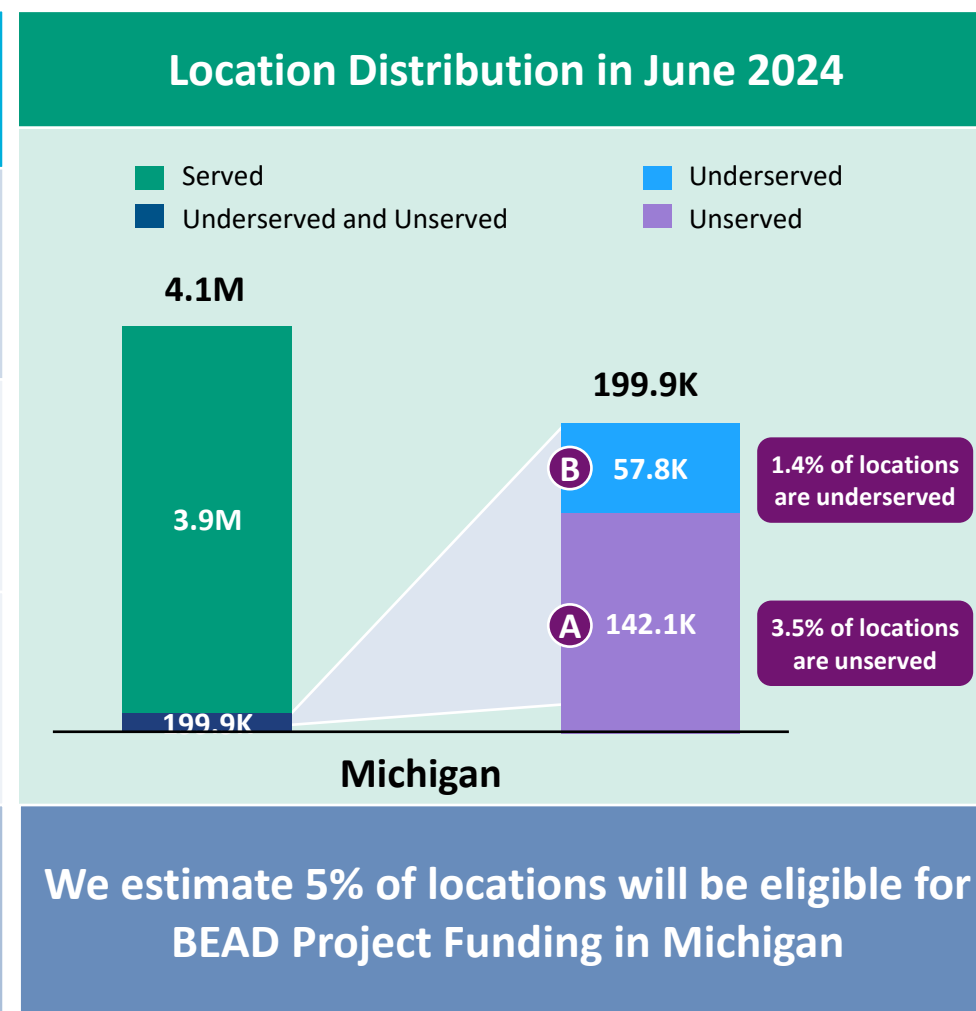
100%
FIBER LOCATIONS

\$1.6B
TOTAL CAPITAL COST

\$552M
REMAINING BUDGET

Michigan | Estimated Eligible Locations for BEAD Projects

 June 2023 FCC Broadband Locations	Unserved <i>(less than 25Mbps/3Mbps)</i>	Underserved <i>(less than 100Mbps/20Mbps)</i>
 Subsidy Program Funded Locations ¹	319.1K	90.1K
 Incremental Build ² (13% annual build, for 12 months)	155.8K	32.3K
 Jun. 2024 Estimated Eligible Locations	21.2K	--
	142.1K A	57.8K B



1. Locations with “commitments” to receive support from federal subsidy programs

2. Given the uncertainty around the magnitude of locations moving from unserved to underserved, we have not made incremental builds adjustments to underserved locations

BEAD eligible locations does not account for state-specific eligibility rules set forth in Initial Proposals

Source: Cartesian, FCC National Broadband Map (June 2023 data, released in November 2023)

Confidential and Proprietary — Copyright © 2024 Cartesian, Inc. All rights reserved.

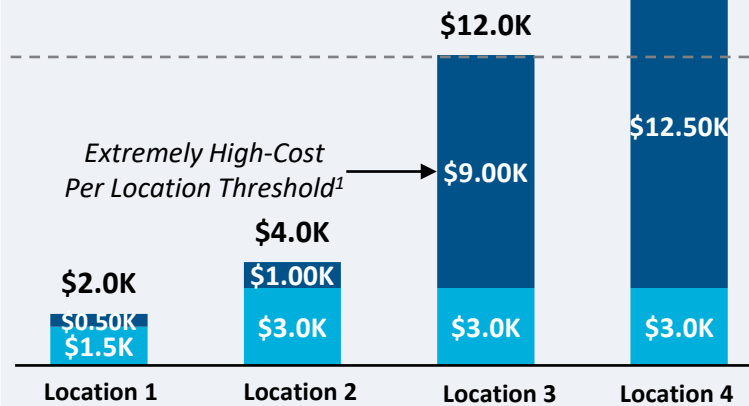
Michigan | BEAD Funding & Estimated Provider Match

Provider Match Examples

Total Deployment Cost per Location

- BEAD Funds Per Location
- Estimated Provider Match

High-Cost
Areas
\$15.5K

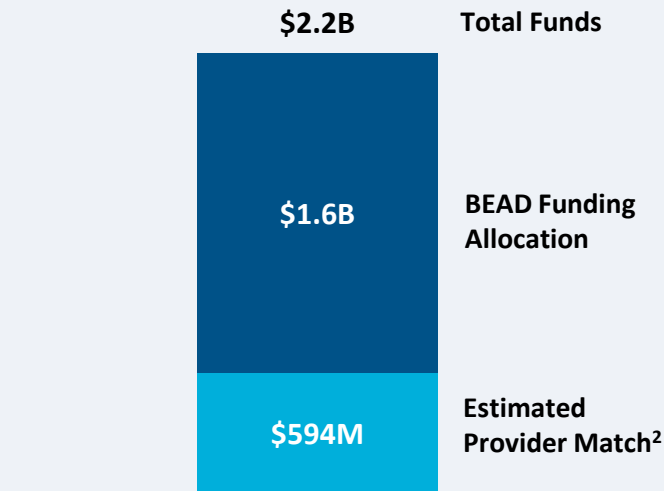


Provider Match %

75%	75%	25%	19%
-----	-----	-----	-----

To be conservative, we assume provider match amounts have a maximum of 75% and a minimum of 25%, except in high-cost areas

Total Capital Available - Michigan



\$2.2B in total capital is estimated to be available to serve unserved/underserved Michigan locations (combining BEAD funding and estimated provider match)

Provider Match - Michigan

Total Estimated
Provider Match:

\$594M

Total Estimated
Eligible Locations:

199.9K

Average
Provider Match:

\$2,970
PER LOCATION

We estimate the average provider match will be \$2,970 – provider matches will be 75% where cost to deploy is less than \$4K

1. The model uses a \$9k threshold, however, States/Territories will individually need to determine their appropriate extremely high-cost threshold

2. In reality, providers will determine the viable level of match funding for each project using a business case model. They will be willing to contribute a greater match in some locations and less in others. Locations which are hardest to serve may need to be fully funded by BEAD with no match. Competitive bidding should drive provider matches towards this level.

Source: Cartesian, FCC National Broadband Map (June 2023 data, released in November 2023), Benton, NTIA

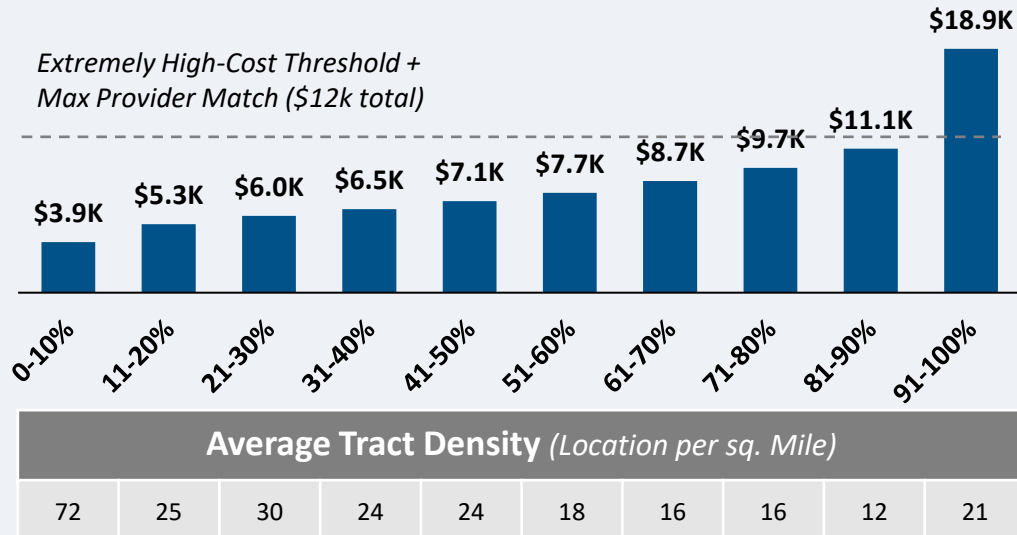
Confidential and Proprietary — Copyright © 2024 Cartesian, Inc. All rights reserved.

Michigan | Cost to Deploy Fiber by Decile

CAPEX Fiber Deployment Cost per Location Segmented by Cost Deciles¹

Unserved Locations

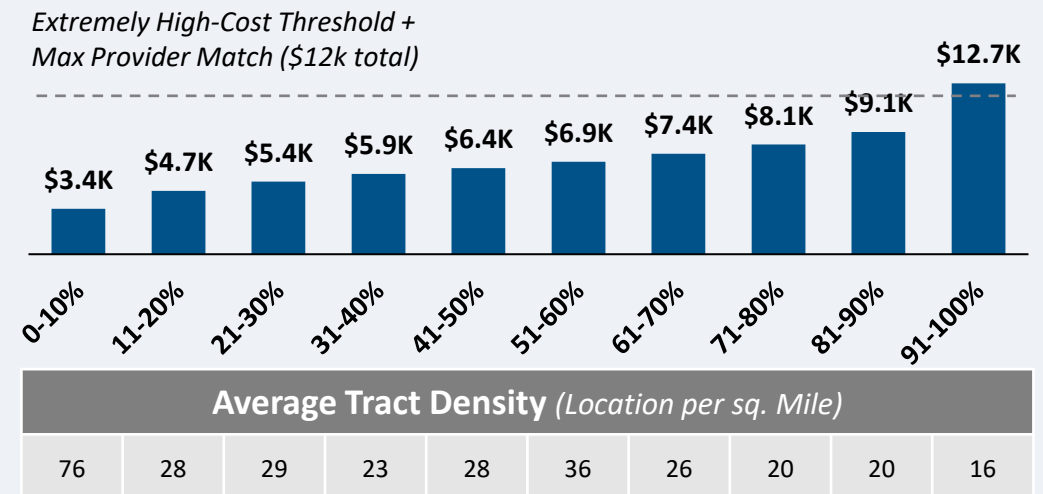
Overall Average Cost per Location: \$8,485



142.1K Locations

Underserved Locations

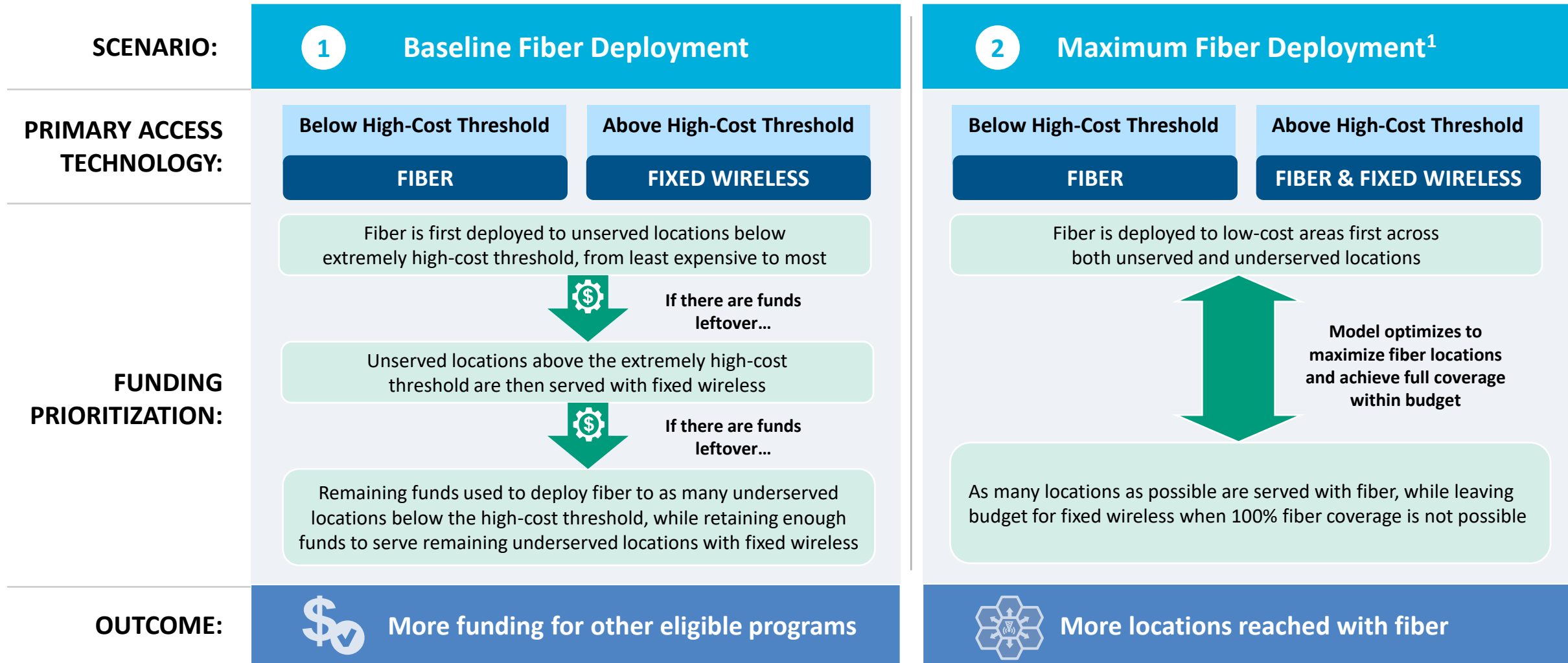
Overall Average Cost per Location: \$7,015



57.8K Locations

Over 90% of locations are estimated to fall below the High-Cost Threshold + Provider Match

Michigan | Fiber Preferencing Scenarios



1. Scenario 2 deploys fiber beyond the extremely high-cost threshold
 Source: Cartesian
 Confidential and Proprietary — Copyright © 2024 Cartesian, Inc. All rights reserved.

3 Develop Deployment Scenarios

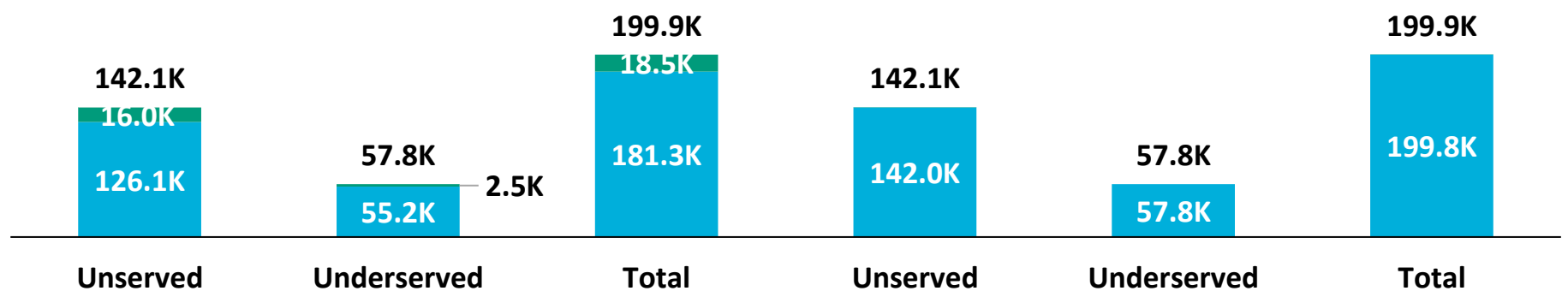
Michigan | Scenario Analysis Results

SCENARIO:

1 Baseline Fiber Deployment

2 Maximum Fiber Deployment

■ Fixed Wireless
■ Fiber



	Scenario 1	Scenario 2
Capex Required per Locations ¹	\$6,981	\$8,416
BEAD Funds Available to State	\$1.6B	\$1.6B
+ Estimated Provider Match	\$594M	\$594M
= Total Available Capital	\$2.2B	\$2.2B
- Capex Required to Build	\$1.4B	\$1.6B
= Remaining Funds	\$782M	\$552M
% of Locations Reached	100%	100%
% of Locations Reached with Fiber	91%	100%

1. Funding to deploy fiber before the maximum \$3k provider match per location
 Source: Cartesian, FCC National Broadband Map (June 2023 data, released in November 2023), Benton, NTIA
 Confidential and Proprietary — Copyright © 2024 Cartesian, Inc. All rights reserved.

Michigan | Conclusion



Funding Summary

Michigan is expected to receive

\$1.6B in BEAD funding



\$594M in estimated provider matching

We estimate the funding is sufficient to reach all of Michigan's 199.9k eligible locations with high-speed broadband



Key Findings

Michigan appears well positioned to reach all eligible premises and have funding for other BEAD eligible programs

A Baseline Fiber Deployment...



Maximizing Fiber...

- Leaves \$782M additional funds for affordability programs
- Reaches 91% of locations with fiber
- Requires 9% to be reached with other tech.

- Leaves \$552M additional funds for affordability programs
- Reaches 100% of locations with fiber
- Requires 0% to be reached with other tech.

States/Territories will set their own extremely high-cost threshold and may choose a threshold or funding paradigm different from these two scenarios

Michigan | ACA Connects Members

Member Name	
Ace Telephone Assoc. dba Acentek	Northeast Comm Of Wisconsin, Inc. dba Nsight
Block Communications, Inc.	Ogden Telephone Company Cablevision
Bloomington Communications, Inc.	Point Broadband, LLC
Cable America Missouri, LLC	Sand Creek Communications Company
Carr Communications	Sister Lakes Cable TV
CCI Systems, Inc. dba Astrea	Springcom, Inc.
City Of Norway	Sunrise Communications, LLC
CMS Internet, LLC	TDS Telecom
Consolidated Communications, Inc.	TVC, Inc.
DPCable TV	Vogtmann Engineering, Inc.
Lakenet, LLC	Waldron Communication Company
Lict Corp	Wide Open West Networks, LLC
Mediacom, LLC	Wyandotte Municipal Service
Metronet	

Source: Cartesian, FCC National Broadband Map (June 2023 data, released in November 2023), ACA Connects Confidential and Proprietary — Copyright © 2024 Cartesian, Inc. All rights reserved.



www.acaconnects.org

GRANT SPELLMEYER
PRESIDENT AND CEO
GSPELLMEYER@ACACONNECTS.ORG

BRIAN HURLEY
CHIEF REGULATORY COUNSEL
BHURLEY@ACACONNECTS.ORG



www.cartesian.com

MICHAEL DARGUE
VICE PRESIDENT
MICHAEL.DARGUE@CARTESIAN.COM

SAMUEL KORNSTEIN
MANAGING DIRECTOR
SAMUEL.KORNSTEIN@CARTESIAN.COM